

**Entering McCormick Place:**

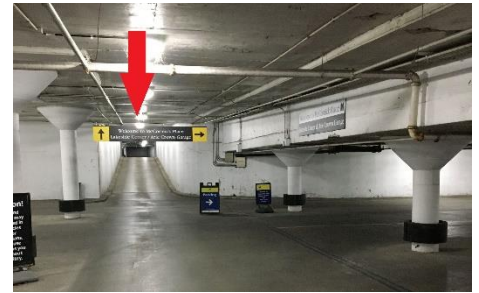
US-41

Exit at E 31<sup>st</sup> Street exit, and drive East towards the lake.

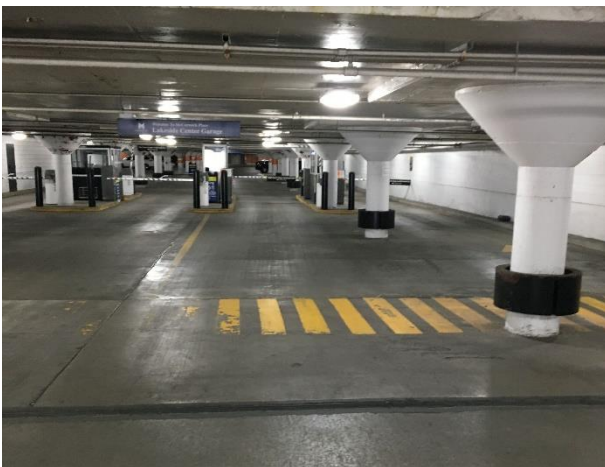
Turn left on Fort Dearborn Drive and drive until you see the McCormick Place Parking Lot C parking lot entrance on the right (leading to the underground lot).



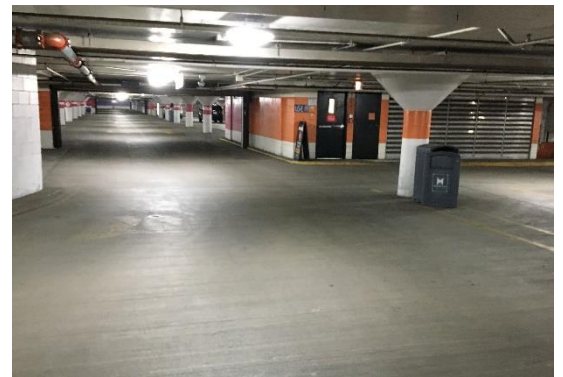
UNITE HERE Chicago Hospitality Institute



Drive into the entrance, but **DO NOT TURN RIGHT!!**  
Proceed straight up the uphill ramp directly in front of you.



At the top of the ramp, turn right, grab a ticket to lift the arm of the gate.

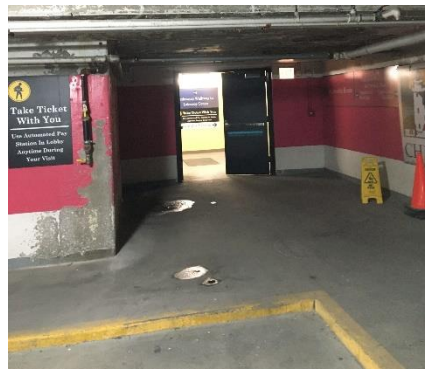
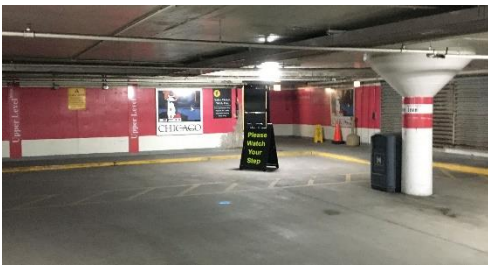


Go through the gate and take the first left.

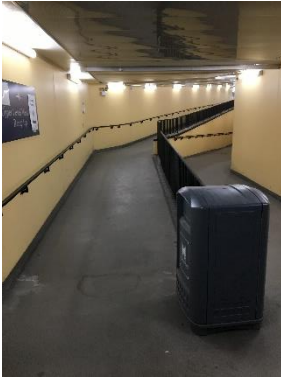
Proceed to aisle 6 or 7 on the left and turn left onto either aisle.



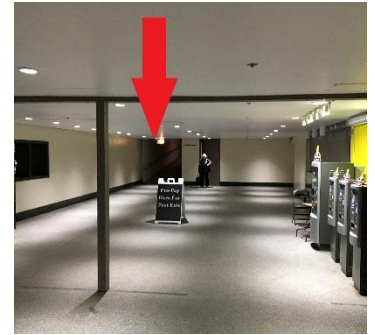
You will see signs for: McCormick Place Lakeside Center Arie Crown Theatre



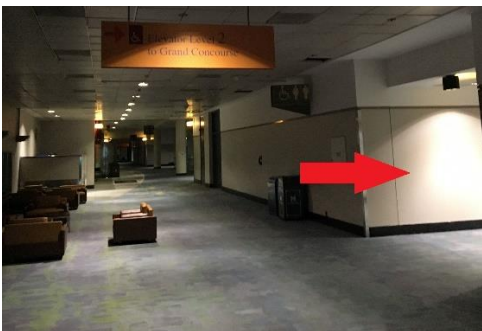
Park, then walk to the far corner of Aisle 5 where you go through a steel door.



Walk up the left ramp.  
(Not down the right/lower ramp!)



Continue until you go through a set of doors to a hallway with parking lot payment machines. Go up the ramp on the far left.



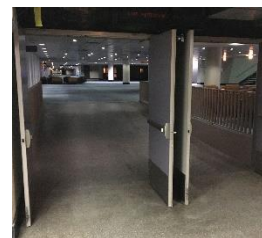
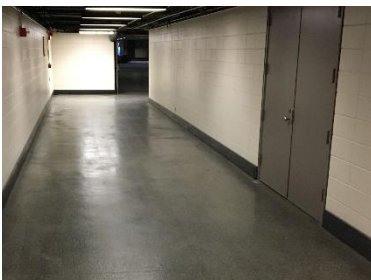
Walking forward at the top of the ramp, look for a sign attached to the ceiling that says:



“Elevator Level 2 to Grand Concourse”.

Take the freight elevator to the 1<sup>st</sup> floor.

Come out of the elevator and take a left down the hallway, and go through the door at the end of the hallway.



(This is the door at the end of the hallway.)

After going through the door, walk up the ramp, staying to the left, walking past the bathrooms and then a bit further until you see the UH-CHI entrance just past the snack/soda vending machines on the right side.

